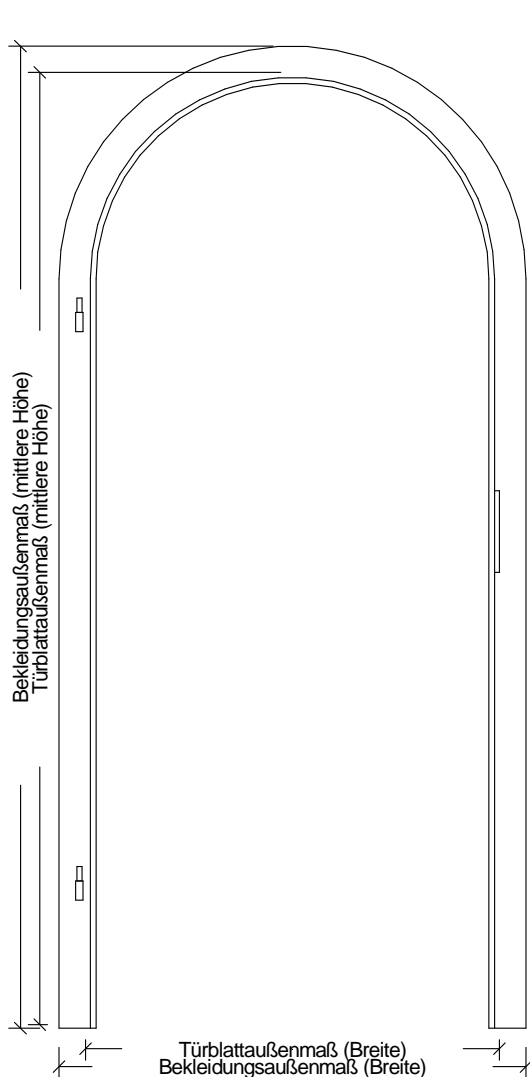
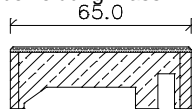




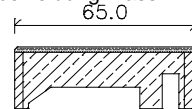
## Weißlack Rundbogenzargen Typ -R



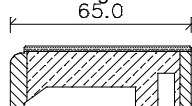
Zierbekleidung massiv MZ-G



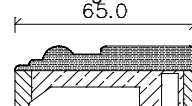
Zierbekleidung massiv MZ-OG



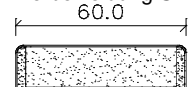
Zierbekleidung massiv MZ-I



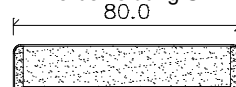
Zierbekleidung massiv MZ-LH



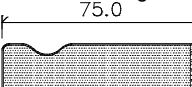
Zierbekleidung SN



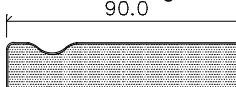
Zierbekleidung SN



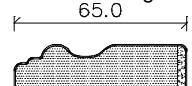
Zierbekleidung PZ2



Zierbekleidung PZ2



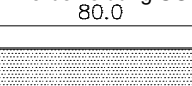
Zierbekleidung LH



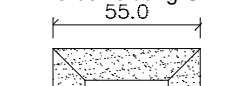
Zierbekleidung LH



Zierbekleidung SG



Zierbekleidung GN



Wandstärke jeweils um + 10 verstellbar

	Türbreite	Zargenfalzmaß	Zargendurchgangmaß (ca.-Maße)	Bekleidungsaußenmaß (bei 60 mm Breite)	Bekleidungsaußenmaß (bei 65 mm Breite)
	610	592	568	712	722
	735	717	693	837	847
	860	842	818	962	972
	985	967	943	1087	1097
	610 + 610 (1210)	1192	1168	1312	1322
	735 + 610 (1335)	1317	1293	1437	1447
	735 + 735 (1460)	1442	1418	1562	1572
	860 + 735 (1585)	1567	1543	1687	1697
	860 + 860 (1710)	1692	1668	1812	1822
	985 + 860 (1835)	1817	1793	1937	1947
	985 + 985 (1960)	1942	1918	2062	2072
<b>Höhe</b>	1985	1983	1971	2043	2048