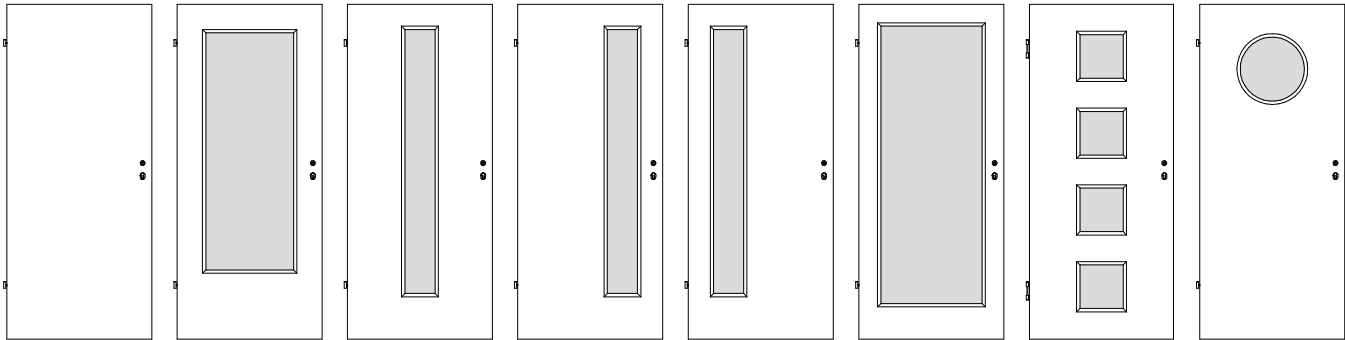




Weißlack Norm- und Funktionstüren



RW/01, RS/01

RS/01-LA1

RS/01-LA2

RS/01-LA3

RS/01-LA4

RS/01-LA5

RS/01-LA6

RS/01-LA7

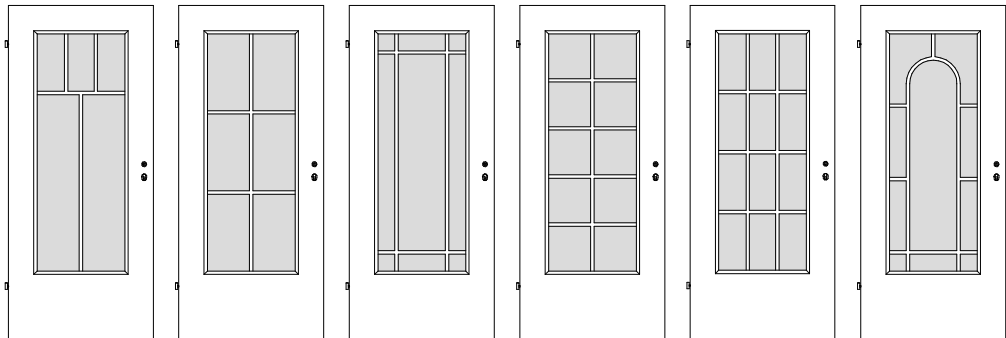
mit 2x V0026WF

Türstärke ca. 40 / 46 mm
Rahmen Massivholz bzw. MDF
mit Schlossverstärkung,
unten doppelter Rahmen

Mittellage siehe unten, Deck aus
Hartfaser, Überschlagn *eckig*

Oberfläche Weißlack

BB-Schloss mit Stulp silberlack
und 2x Bänder V0020 vernickelt
(Bänder V0026WF + PZ-Schloss +
Schallex ab Türmodell VS/1S bis
Türmodell SD/2S-K2)



RS/01-SP5

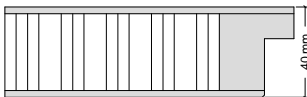
RS/01-SP6

RS/01-SJ9

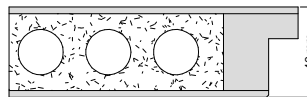
RS/01-SP10

RS/01-SP12

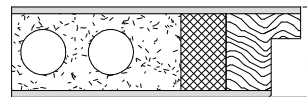
RS/01-SP10R



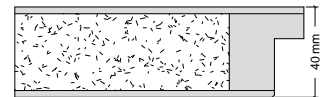
RW/01
Klimakl. I



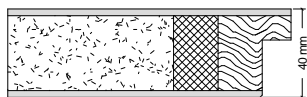
RS/01
Klimakl. I



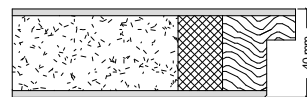
RS/01-K2
Klimakl. II / SSK 1



VS/01
Klimakl. I / SSK 1



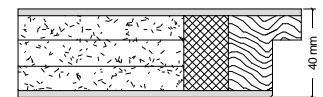
VS/01-K2
Klimakl. II / SSK 1



VS/1S
Klimakl. II / SSK 1



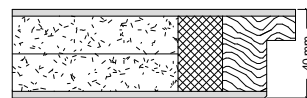
VS/1S-K3
Klimakl. III / SSK 1



VS/3S
Klimakl. II / SSK 2



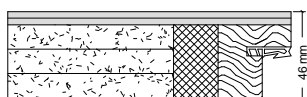
VS/3S-K3
Klimakl. III / SSK 2



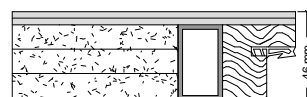
VS/S2
Klimakl. II / SSK 3



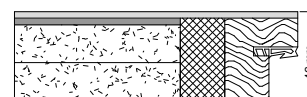
VS/S2-K3
Klimakl. III / SSK 3



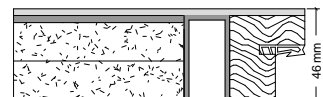
SH/3S-D
Klimakl. II / SSK 2



SH/3SD-K3
Klimakl. III / SSK 2



SD/2S-K2
Klimakl. II / SSK 3



SD/2S-K3
Klimakl. III / SSK 3

Zylindrlänge bei 40 mm Tür:
15 / 25 mm zzgl. Rosettenstärke

Zylindrlänge bei 46 mm Tür:
15 / 31 mm zzgl. Rosettenstärke