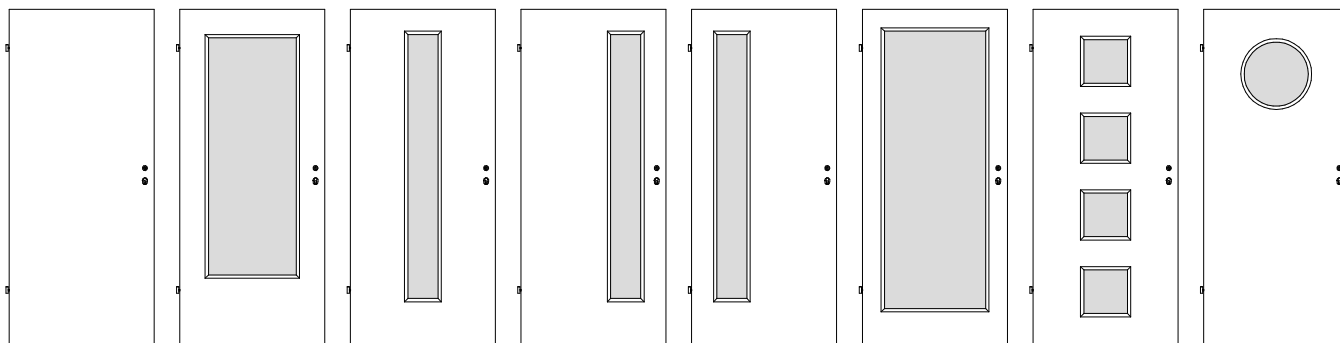




Weißlack Rundkanten-Türen RR



RR/01

RR/01-LA1

RR/01-LA2

RR/01-LA3

RR/01-LA4

RR/01-LA5

RR/01-LA6

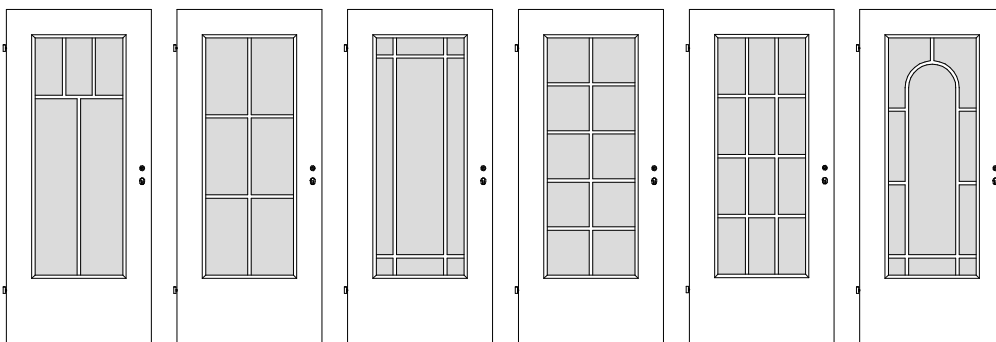
RR/01-LA7

Türstärke ca. 40 / 46 mm
Rahmen Massivholz bzw. MDF
mit Schlossverstärkung,
unten doppelter Rahmen

Mittellage siehe unten, Deck aus
Hartfaser, Überschlagn *Rundkante*

Oberfläche Weißlack

BB-Schloss mit Stulp silberlack
und 2x Bänder V 0020 vernickelt
(Bänder V 0026 WF + PZ-Schloss
+ Schalllex ab Türmodell RV/1S bis
Türmodell RL/2S-K3)



RR/01-SP5

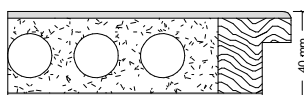
RR/01-SP6

RR/01-SJ9

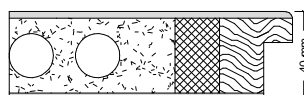
RR/01-SP10

RR/01-SP12

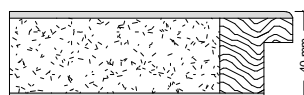
RR/01-SP10R



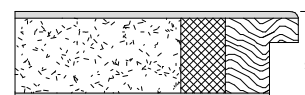
RR/01
Klimakl. I



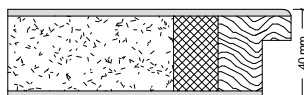
RR/01-K2
Klimakl. II / SSK 1



RV/01
Klimakl. I



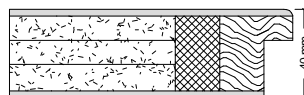
RV/01-K2
Klimakl. II / SSK 1



RV/1S
Klimakl. II / SSK 1



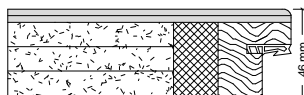
RV/1S-K3
Klimakl. III / SSK 1



RV/3S
Klimakl. II / SSK 2



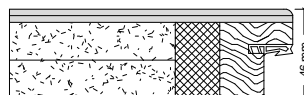
RV/3S-K3
Klimakl. III / SSK 2



RM/3S-D
Klimakl. II / SSK 2



RM/3SD-K3
Klimakl. III / SSK 2



RL/2S-K2
Klimakl. II / SSK 3



RL/2S-K3
Klimakl. III / SSK 3