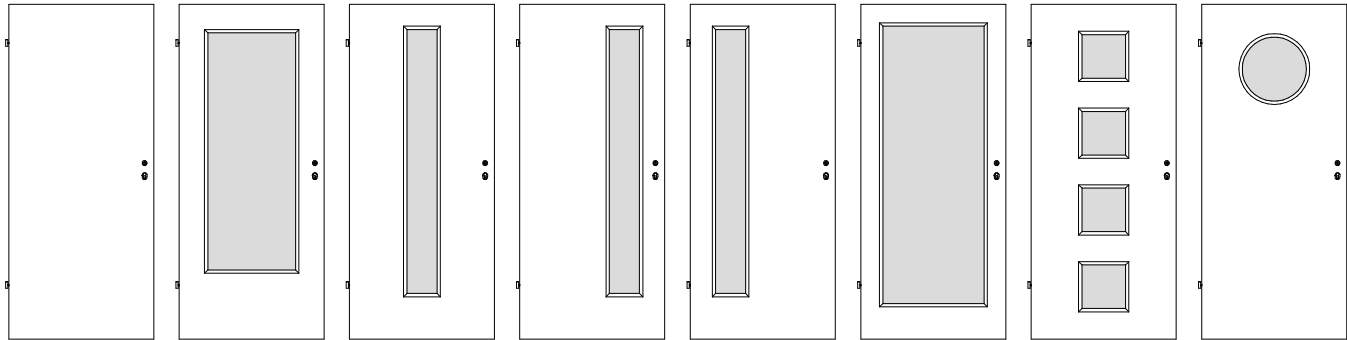




Weißlack Norm- und Funktionstüren



RW/01, RS/01

RS/01-LA1

RS/01-LA2

RS/01-LA3

RS/01-LA4

RS/01-LA5

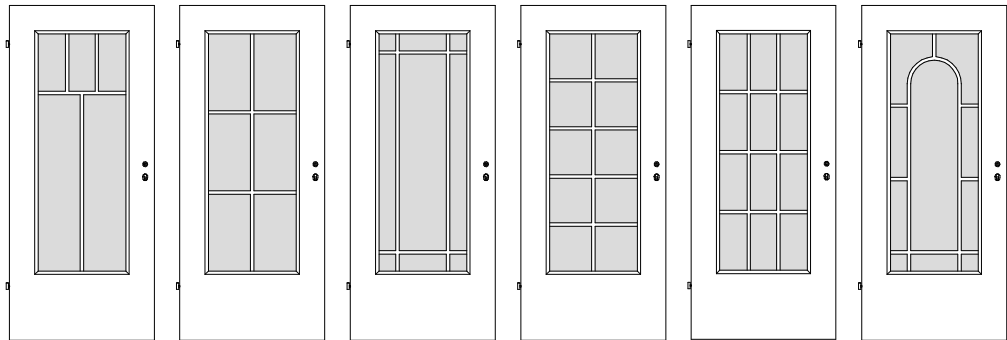
RS/01-LA6

RS/01-LA7

Türstärke und Aufbau
siehe Zeichnungen unten

Oberfläche Weißlack

Schloss silberlack Stulp,
Bänder V 0020 vernickelt
(Bänder V 0026 WF ab
Türmodell VS/01)



RS/01-SP5

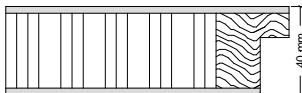
RS/01-SP6

RS/01-SJ9

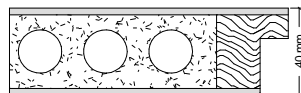
RS/01-SP10

RS/01-SP12

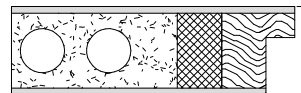
RS/01-SP10R



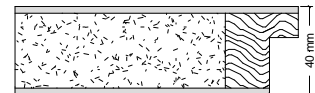
RW/01
Klimakl. I



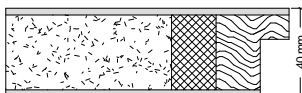
RS/01
Klimakl. I



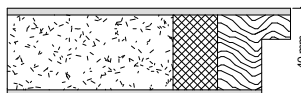
RS/01-K2
Klimakl. II / SSK 1



VS/01
Klimakl. I / SSK 1



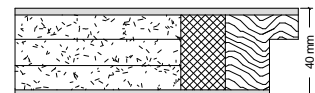
VS/01-K2
Klimakl. II / SSK 1



VS/1S
Klimakl. II / SSK 1



VS/1S-K3
Klimakl. III / SSK 1



VS/3S
Klimakl. II / SSK 2



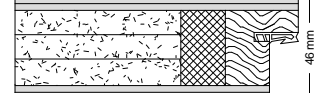
VS/3S-K3
Klimakl. III / SSK 2



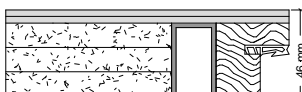
VS/S2
Klimakl. II / SSK 3



VS/S2-K3
Klimakl. III / SSK 3



SH/3S-D
Klimakl. II / SSK 2



SH/3SD-K3

Klimakl. III / SSK 2



SD/2S-K2

Klimakl. II / SSK 3